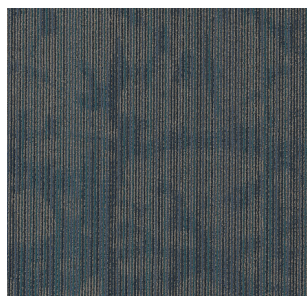
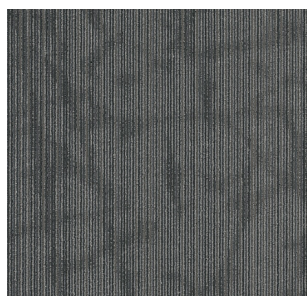




300 Code



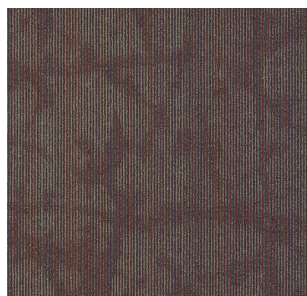
400 Comic



500 Tag



700 Raw



906 Piece



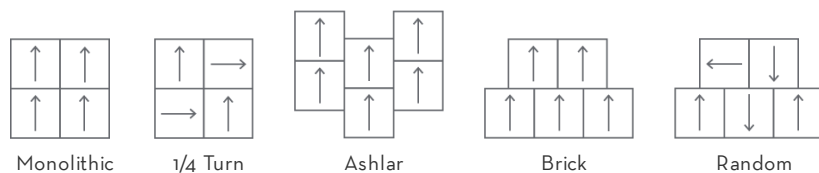
504 Kobra

Style Name	Hipster
Collection Name	Beyond The Wall Collection
Style Number	54895
Product Type	Soft Surface - Philadelphia
Construction	Multi-Level Pattern Loop
Fiber	Eco Solution Q [®] Nylon
Dye Method	Solution Dyed
Primary Backing	Synthetic
Secondary Backing	StrataWorx [®] Tile
Traffic Rating	Heavy
Protective Treatments	SSP Shaw Soil Protection

	U.S.	Metric
Product Size	24 in x 24 in	6096 cm x 6096 cm
Area Per Carton	80 ft ²	743 m ²
Pieces Per Carton	20	
Gauge	1/10 in	3937 per 10 cm
Stitches	11 per in	43 per 10 cm
Finished Pile Thickness	0.071 in	1.8 mm
Average Density	7606 oz/yd ³	
Total Thickness	0.221 in	5.61 mm
Tufted Weight	15 oz/yd ²	508.6 g/m ²



Recommended Installation Methods



Performance Testing

Pill Test	Pass
Radiant Panel	Class I
NBS Smoke	Less than 450
Electrostatic Propensity	Less than 3.5 kv
CRI [®] Greenlabel Plus	GLP2671
ADA Compliance	>0.6, meets the recommended static coefficient of friction for ADA walking surfaces and accessible routes

Test Reports may be included or listed by the manufacturing/inventory style number as opposed to the noted selling style number.

Warranties

Carpet Tile 15 year Commercial Limited Warranty with Stain and Color for StrataWorx

Environmental

Recycled Content	Pre-consumer - 24%, Post-consumer - 0%
Environmental Product Declaration (EPD)	3rd Party Certified in Accordance with ISO14044, ISO14025 & EN15804
Health Product Declaration (HPD)	Disclosed to 1,000 ppm
Cradle to Cradle Certified®	Certified Silver Level (Version 3.1)
Declare	Living Building Challenge: Compliant
NSF 140	Conforms to the NSF/ANSI 140 - 2019 Sustainability Assessment for Carpet
Indoor Air Quality	CRI® Green Label Plus (GLP2671)

Specifications are subject to nominal manufacturing variance.
Material supply and/or manufacturing processes may necessitate changes without notice.